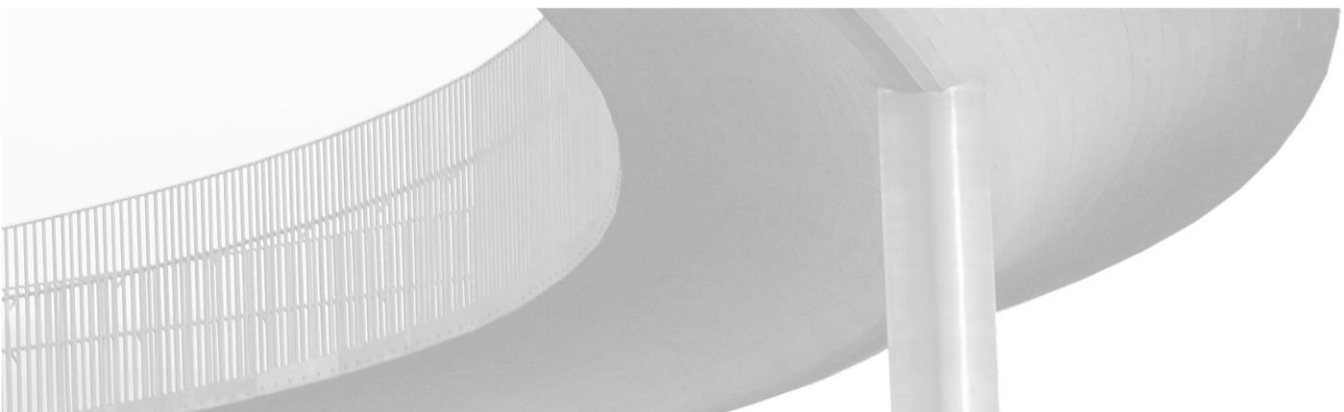


WASTEWATER MEASUREMENTS

**Measurements of Total Wastewater (TWW) from the Becromal
factory at Akureyri**

22.03.2017



REPORT – INFORMATION SHEET

DOCUMENT SYSTEM CODE

3848-007-SKY-001-V01

REPORT TITLE

Wastewater Measurements

REPORT NUMBER / TOTAL PAGES

3848-007 / 15

PROJECT

Measurements of Total Wastewater (TWW) from the Becromal factory at Akureyri 2017

PROJECT MANAGER / CLIENT REPRESENT.

Christopher R. Tucker
Urszula Tlolka

CLIENT

Becromal Iceland

PROJECT MANAGER – EFLA

Páll Höskuldsson

AUTHOR

Páll Höskuldsson

KEYWORDS

Wastewater, Chemicals, Discharge limits

EXTRACT

In February 2017 TWW (total wastewater) was monitored for three days, water samples taken and analysed for chemical composition. Flow, temperature and pH were also measured. Results were compared to discharge limits in the operating permit.

REPORT STATUS

- Draft
- Copy editing
- Final

REPORT DISTRIBUTION

- Open
- With client permission
- Confidential



VERSION HISTORY

<u>NO.</u>	<u>AUTHOR</u>	<u>DATE</u>	<u>REVIEWED</u>	<u>DATE</u>	<u>APPROVED</u>	<u>DATE</u>
01	PH	22.03.17				
<hr/>						
<hr/>						
<hr/>						
<hr/>						

Table of contents

1	PROJECT OBJECTIVES AND DESCRIPTION	8
2	METHODS	9
3	RESULTS	12
3.1	Flow, temperature and pH measurements	12
3.2	Chemical Analysis	14

LIST OF FIGURES

Figure 1	Sampling points _____	10
Figure 2	Temperature- and pH-meters for the measurement of Preox. _____	10
Figure 3	Sampling of Preox . _____	10
Figure 4	Flow measurement of Preox with a portable full pipe flow meter. _____	11
Figure 5	Sampling of PWW with an auto sampler. _____	11
Figure 6	Flow and pH of the PWW-stream, measured February 12-14, 2017. _____	12
Figure 7	Temperature and pH of the PREOX-stream, measured February 12-14, 2017. _____	13

LIST OF TABLES

Table 1	Average flow rate per day of each stream and of the TWW. _____	12
Table 2	Chemical concentration in the 3-day composite sample (12-14 February 2017) compared to discharge limits and estimated release values in the operating permit. _____	14
Table 3	Chemical discharge per day. _____	15

1 PROJECT OBJECTIVES AND DESCRIPTION

In February 2017, TWW (total wastewater) from Becromal's factory in Akureyri was monitored over 3 days. Water samples were taken and analysed for chemical concentration and the flow, temperature and pH were also measured. Results were compared to discharge limits in the operating permit.

The total wastewater (TWW) consists of two streams that mix together before being discharged to the municipal wastewater system. These streams are:

1. Production wastewater (PWW) from diverse processes at the plant, e.g. from the cleaning of filters and regeneration of deionizing resins. Before being released to the effluent pipe the PWW is equalized in an equalization tank and neutralized in a neutralization tank. The outflow can vary considerably but is on average around 500 m³/day. The temperature is usually around 20°C.
2. PREOX, hot 80-90 °C deionised water used for the pretreatment of pure aluminium foil and is assumed to be free of chemicals when released to the effluent. The flow is stable and less than 1,000 m³/day.

2 METHODS

Samples were collected over three days and one average sample was prepared for chemical analysis. Samples were taken from two sampling points as can be seen on figure 1. Photos of sampling equipment and locations can be seen in figures 2 to 5.

Sampling point 1 – Sampling of PWW. The sampling point is located inside the factory building where the water has just exited the neutralization tank, before being released to the effluent pipe. The samples were taken with an autosampler, taking continuous 22 mL subsamples every 8 minutes into 4 separate bottles every 24 hours. One average composite sample was made for each day, proportional to flow. Flow and pH were measured using fixed measurement instruments of the PWW-stream.

Sampling point 2 – Sampling of PREOX. The sample was taken from the PREOX-tank before being released to the effluent pipe. The tank is located inside in the basement of the factory building. A solenoid valve was installed on the PREOX-stream inlet to the tank. Every 5 minutes, the sampler collected 5 second samples into a small barrel. One sample was collected for every 24 hours, a total of 23 litres. The temperature and pH of the PREOX-stream were measured with fixed measurement instruments. The PREOX-flow was measured using a portable full-pipe flow meter inside the factory.

From the day samples of the PWW and PREOX streams, one flow proportional average composite TWW sample was prepared for chemical analysis.

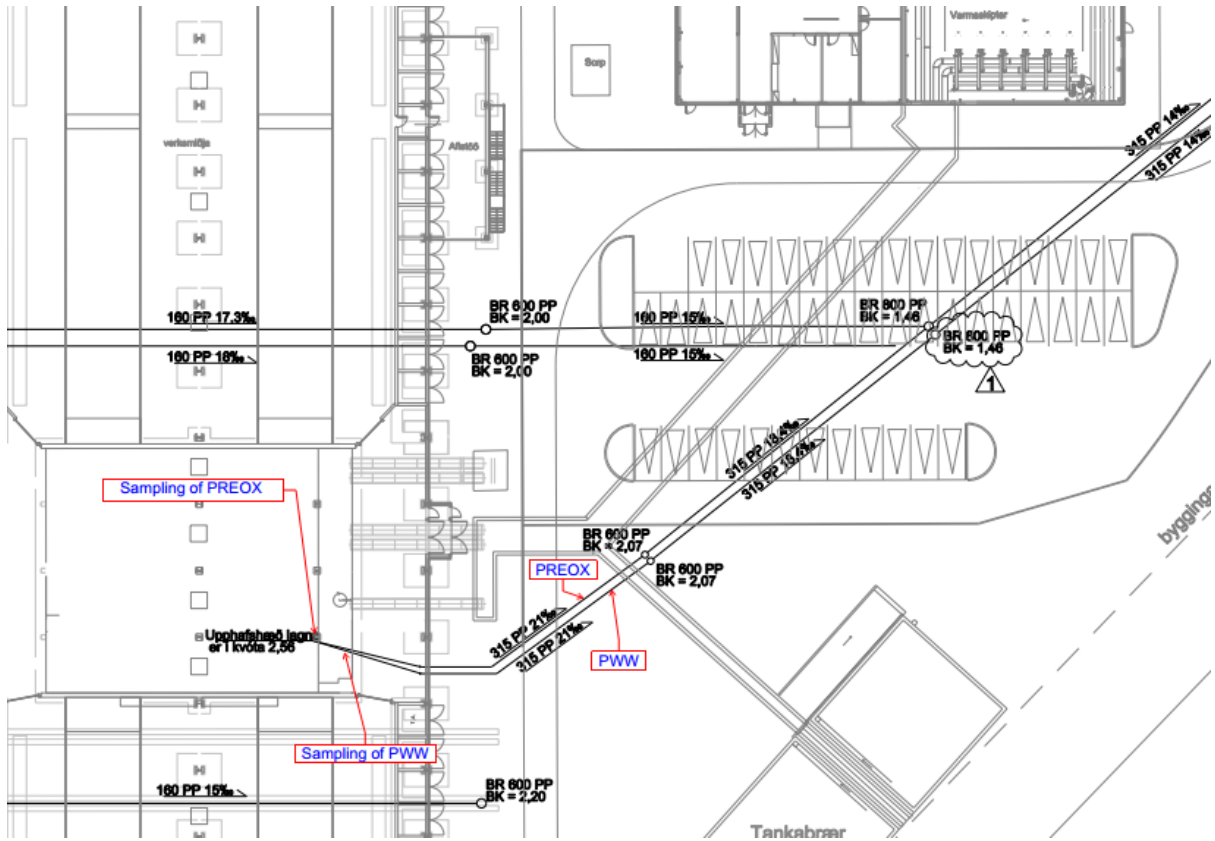


FIGURE 1 Sampling points



FIGURE 2 Temperature- and pH-meters for the measurement of Preox.



FIGURE 3 Sampling of Preox .



FIGURE 4 Flow measurement of Preox with a portable full pipe flow meter.



FIGURE 5 Sampling of PWW with an auto sampler.

3 RESULTS

3.1 Flow, temperature and pH measurements

Table 1 shows daily average values for TWW which consists of two streams:

- a) PWW, i.e. process wastewater.
- b) PREOX, hot 80-90 °C deionised water used for the pretreatment of pure aluminium foil.

TABLE 1 Average flow rate per day of each stream and of the TWW.

Date and time	PREOX [m ³ /d]	PWW [m ³ /d]	TWW [m ³ /d]
12 February 2017	900	236	1,136
13 February 2017	857	496	1,353
14 February 2017	846	377	1,223
Average February 12-14, 2017	868	370	1,237

$$TWW = PREOX + PWW$$

Figure 6 presents the flow and pH of the PWW-stream and figure 7 presents the temperature and pH of the PREOX-stream. Figure 7 shows rather stable pH values, between 8.5 and 8.7 in the PREOX-stream during the measurement period. The temperature is quite stable around 85 °C.

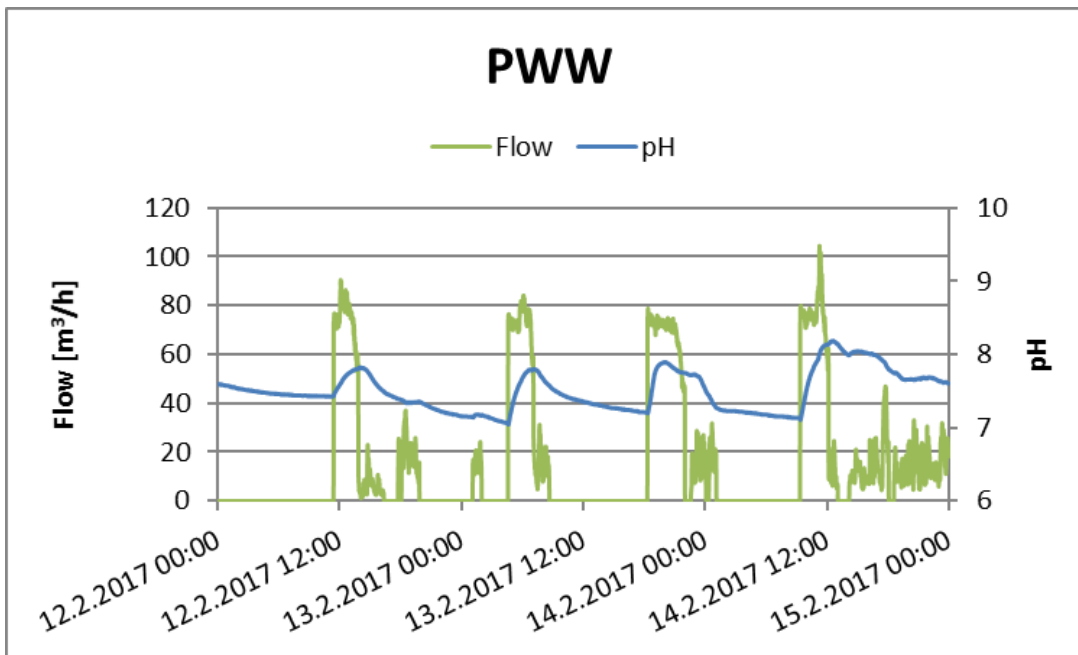


FIGURE 6 Flow and pH of the PWW-stream, measured February 12-14, 2017.

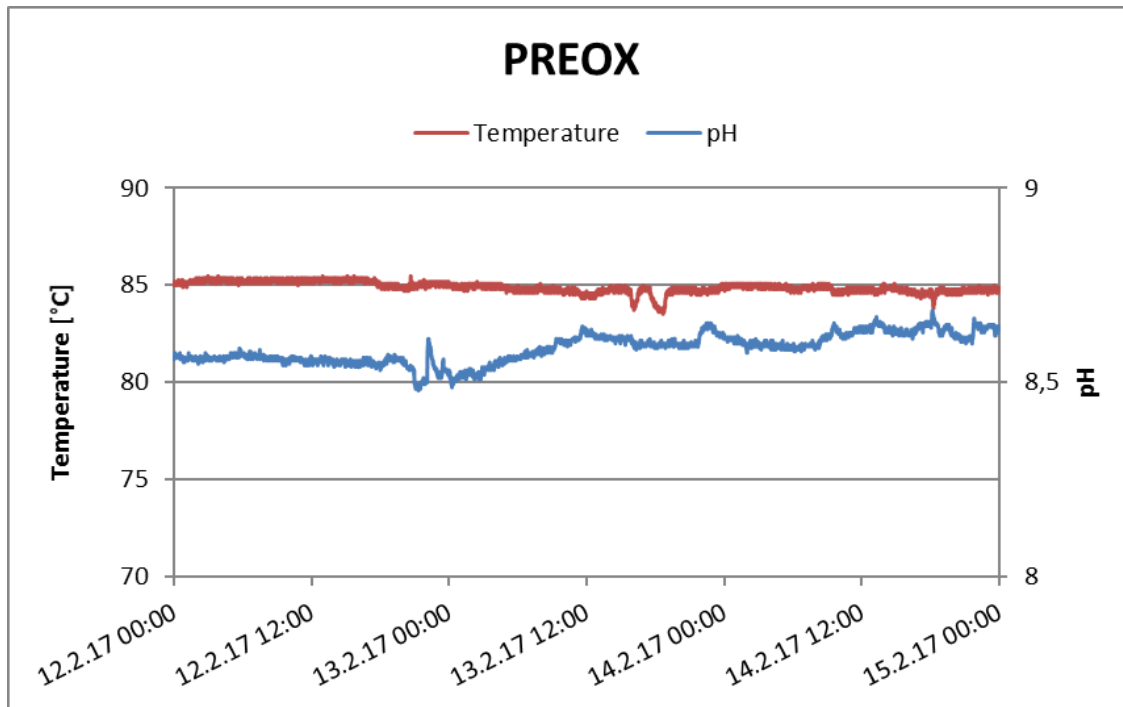


FIGURE 7 Temperature and pH of the PREOX-stream, measured February 12-14, 2017.

3.2 Chemical Analysis

Table 2 presents chemical concentrations in the 3-day composite sample (12-14 February 2017). Results are compared to discharge limits and estimated release values in the operating permit.

TABLE 2 Chemical concentration in the 3-day composite sample (12-14 February 2017) compared to discharge limits and estimated release values in the operating permit.

Element	Unit	TWW February 2017	Discharge limits*	Estimated release*
TSS	mg/L	24	220	
COD	mg/L	26	500	
P	mg/L	9,6		9
N	mg/L	4,0		
Al	mg/L	3,0		1
B	mg/L	0,3		7
Ca	mg/L	4,9		
Fe	mg/L	0,04		
K	mg/L	0,9		
Mg	mg/L	1,2		
Na	mg/L	20,2		210
S	mg/L	0,4		60
EDTA	mg/L	0,3		6
As	µg/L	<0.5		
Ba	µg/L	2,0		
Cd	µg/L	<0.05		
Co	µg/L	0,2		
Cr	µg/L	<0.9		
Cu	µg/L	9,1		
Hg	µg/L	<0.02	50	
Mn	µg/L	1,45		
Mo	µg/L	6,6		
Ni	µg/L	21,6		
Pb	µg/L	1,5		
V	µg/L	7,4		
Zn	µg/L	38,9		

* According to operating permit

TABLE 3 Chemical discharge per day.

Element	Unit	TWW February 2017	Chemical discharge [kg/day]
TSS	mg/L	24	29,7
COD	mg/L	26	32,4
P	mg/L	9,6	11,9
N	mg/L	4,0	4,9
Al	mg/L	3,0	3,7
B	mg/L	0,3	0,3
Ca	mg/L	4,9	6,0
Fe	mg/L	0,04	0,0
K	mg/L	0,9	1,2
Mg	mg/L	1,2	1,5
Na	mg/L	20,2	25,0
S	mg/L	0,4	0,5
EDTA	mg/L	0,3	0,3
As	µg/L	<0.5	
Ba	µg/L	2,0	0,0024
Cd	µg/L	<0.05	
Co	µg/L	0,2	0,0003
Cr	µg/L	<0.9	
Cu	µg/L	9,1	0,0112
Hg	µg/L	<0.02	
Mn	µg/L	1,45	0,0018
Mo	µg/L	6,6	0,0081
Ni	µg/L	21,6	0,0267
Pb	µg/L	1,5	0,0019
V	µg/L	7,4	0,0092
Zn	µg/L	38,9	0,0481

